






Legenda


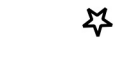


-  Limite comunale
- FORME DI SUPERFICIE**
-  Scarpata antropica
- ZONE SUSCETTIBILI DI INSTABILITA'**
-  Cedimenti differenziali "CD"
-  Amplificazione stratigrafica
-  Liquefazione "L"
- Instabilità di versante "FR":**
-  Frana attiva (FA)
-  Frana quiescente (FQ)
- ZONE STABILI SUSCETTIBILI DI AMPLIFICAZIONI LOCALI**
-  ZONA 1
-  ZONA 2
-  ZONA 3
-  ZONA 4
-  ZONA 5
-  ZONA 6
-  ZONA 7
-  ZONA 8
-  ZONA 9
-  ZONA 10
-  ZONA 11

MISURE DI FREQUENZA DI SITO (sismica passiva)

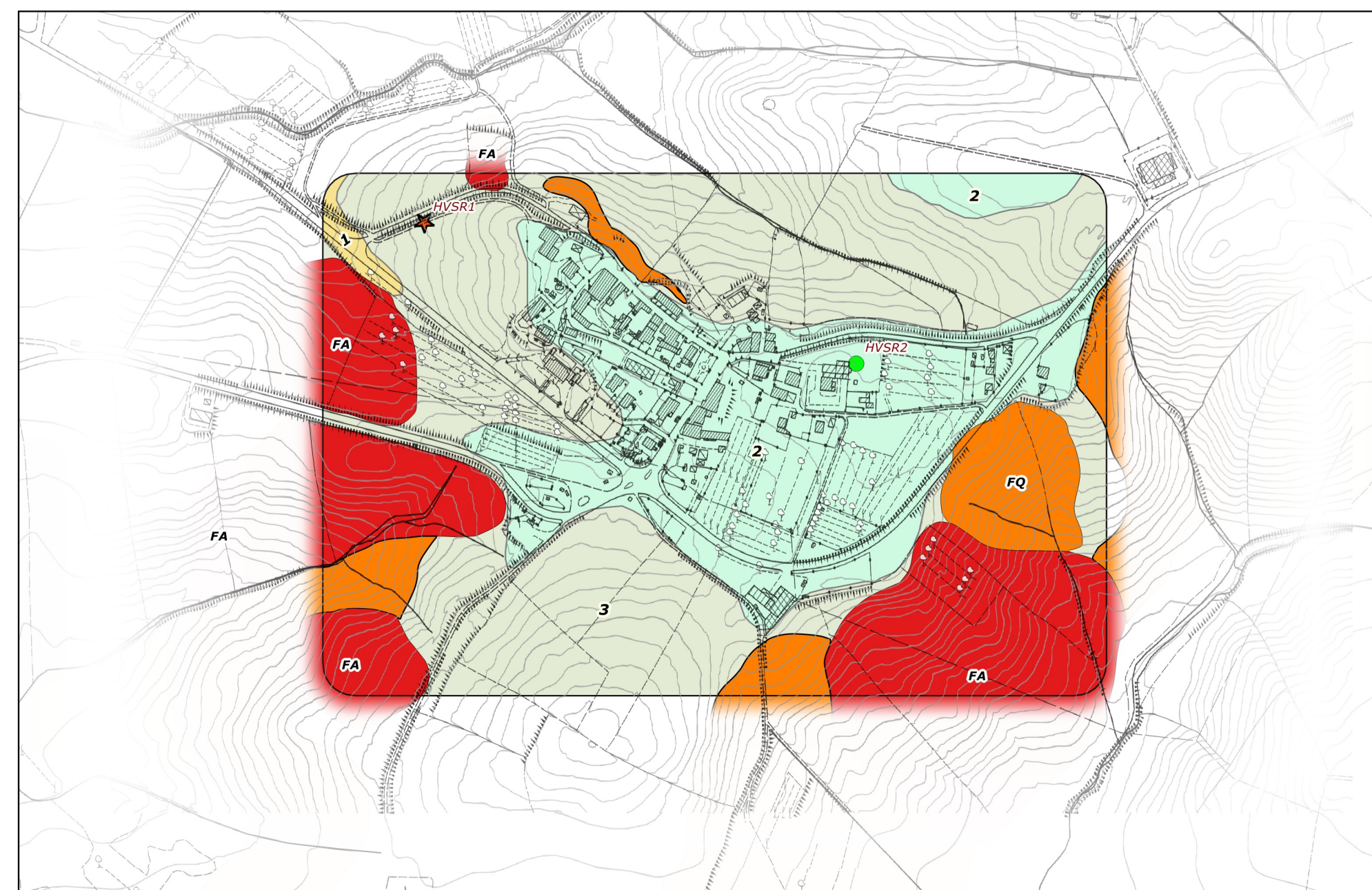
Frequenza del picco di amplificazione (Hz), scala cromatica:

-  4.0 - 20.0
-  2.0 - 4.0
-  1.5 - 2.0
-  1.0 - 1.5
-  < 1.0

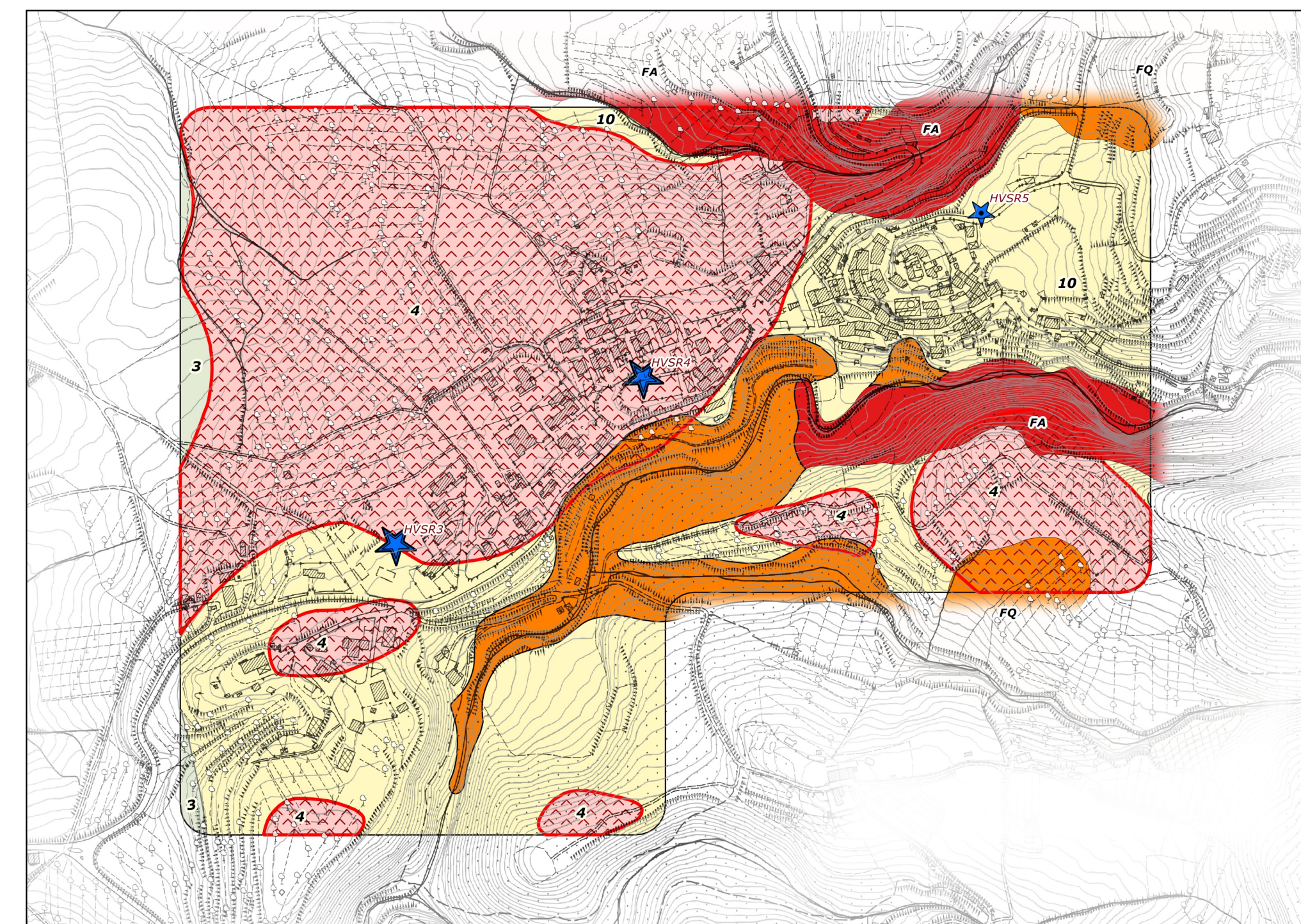
Ampiezza del picco di amplificazione (A0), scala dimensionale:

-  < 2 (nessuna amplificazione)
-  2 - 3
-  3 - 4
-  > 4

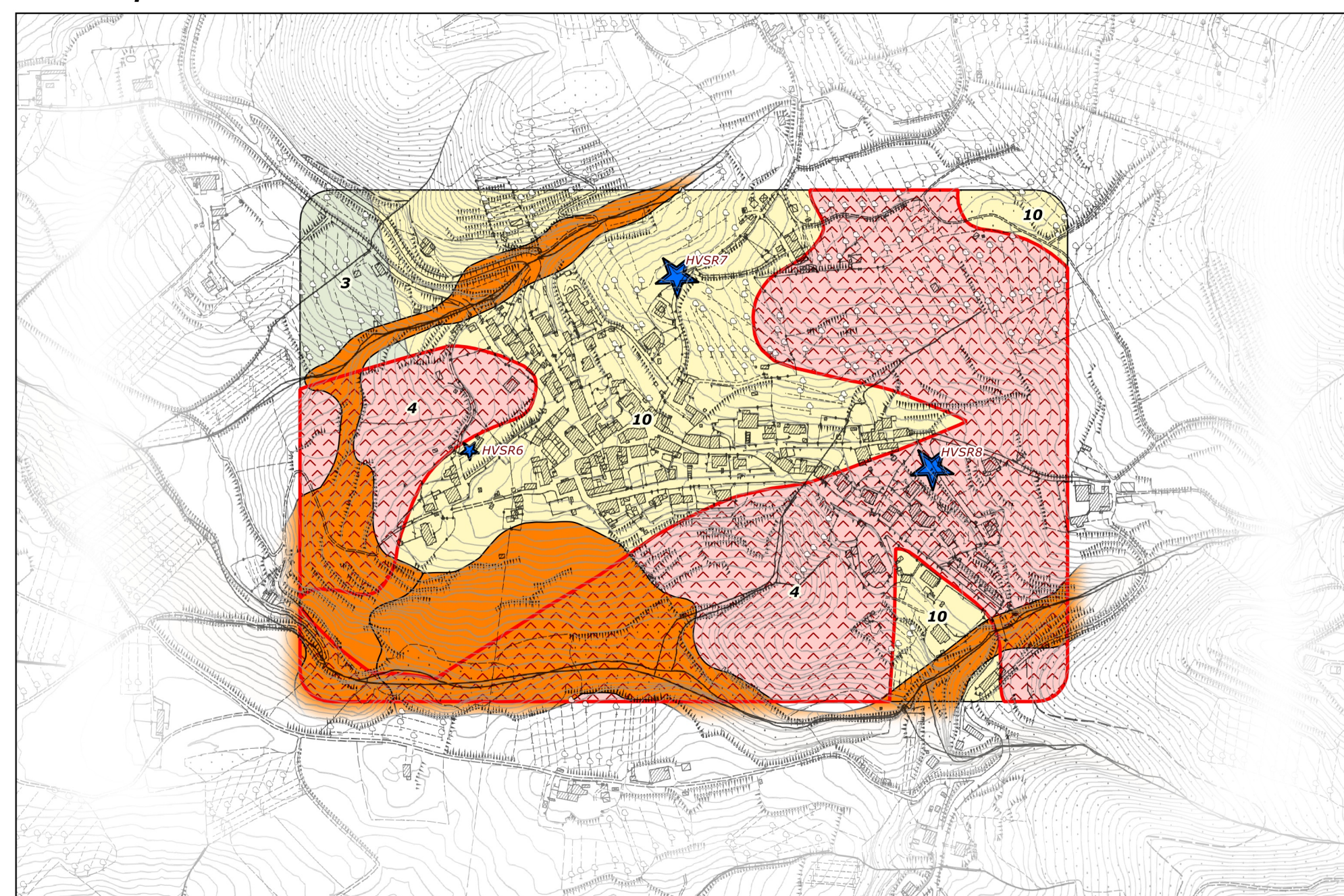
Area Mops Pieve di Santa Luce



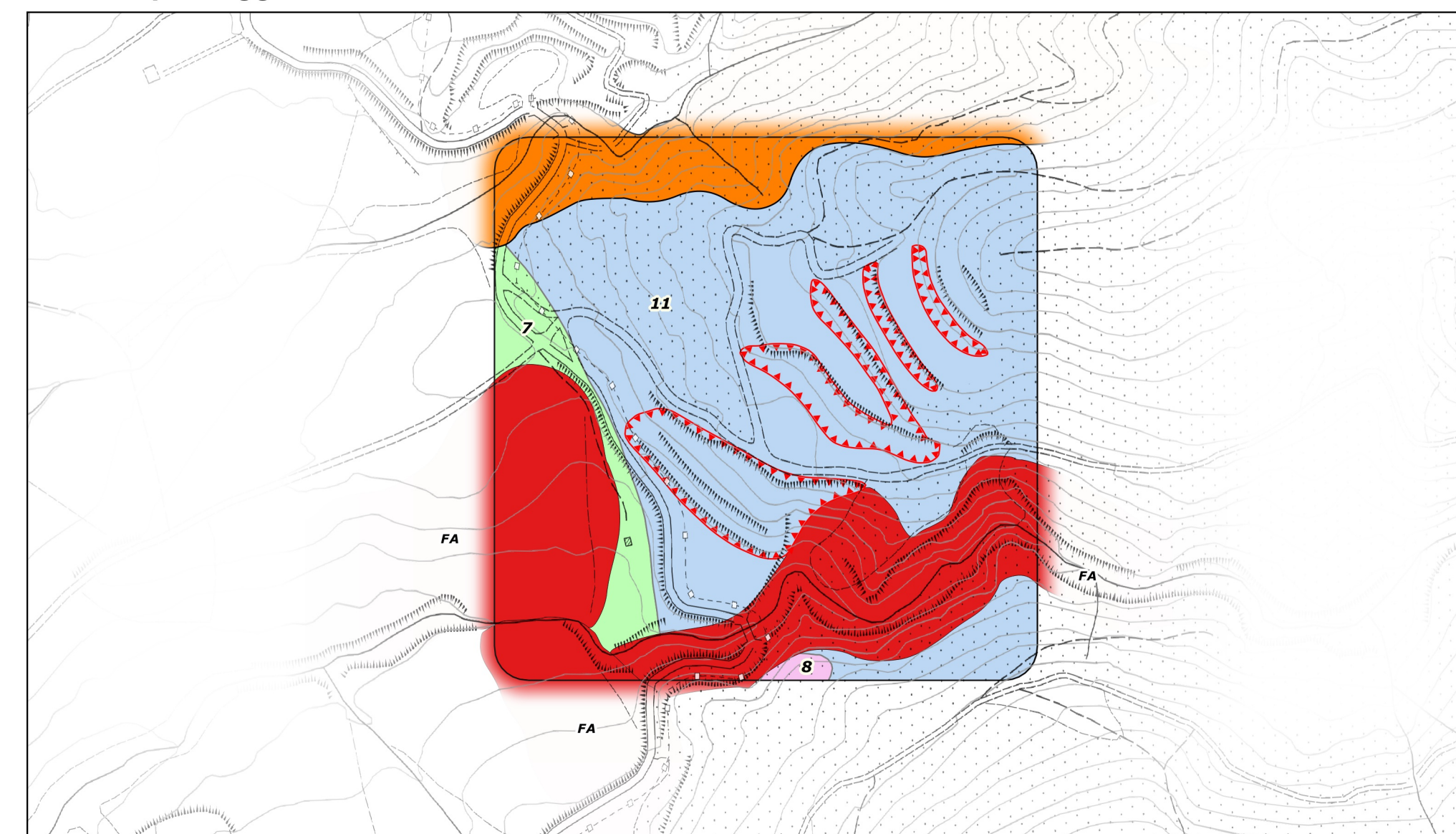
Area Mops Santa Luce



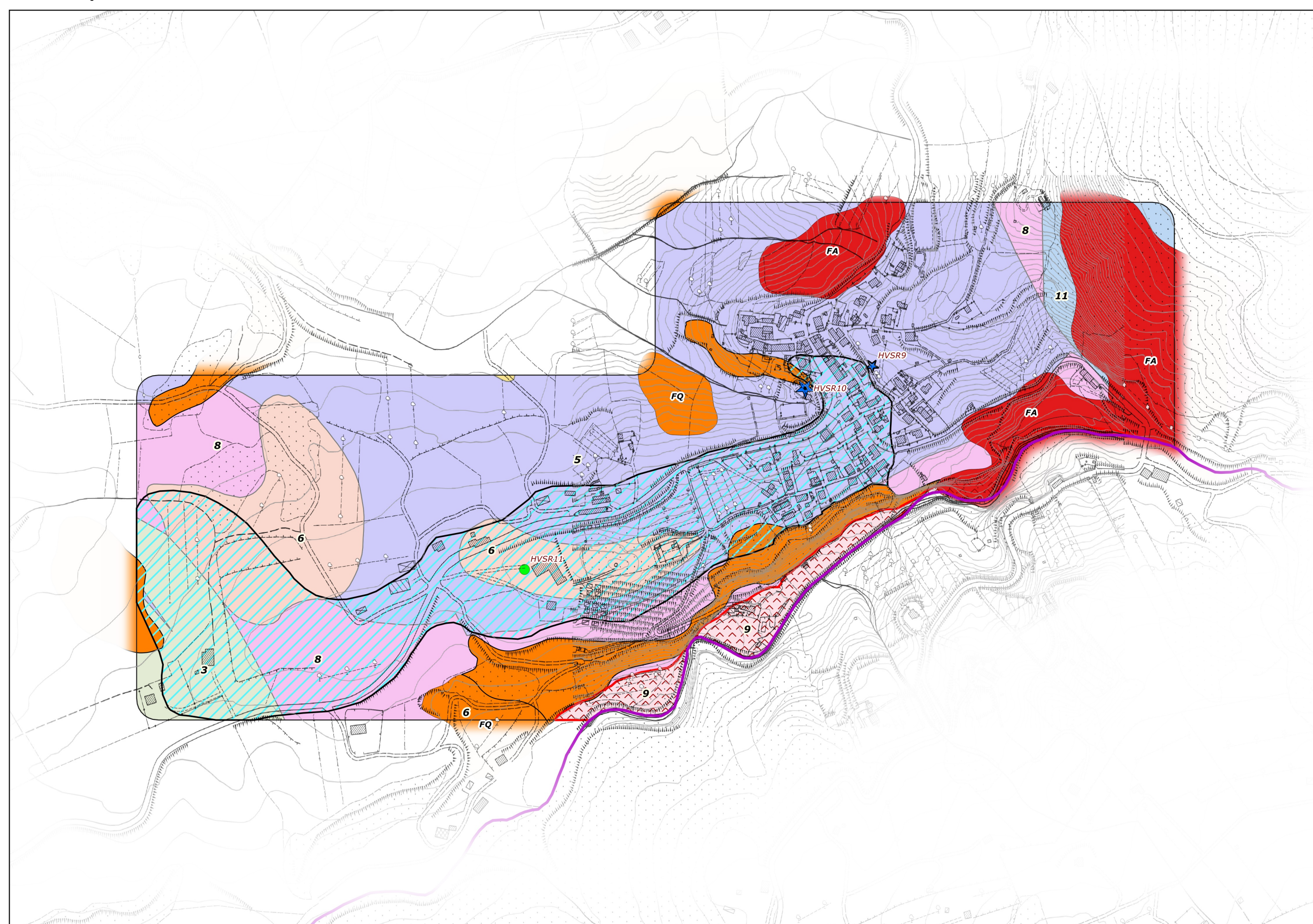
Area Mops Pastina



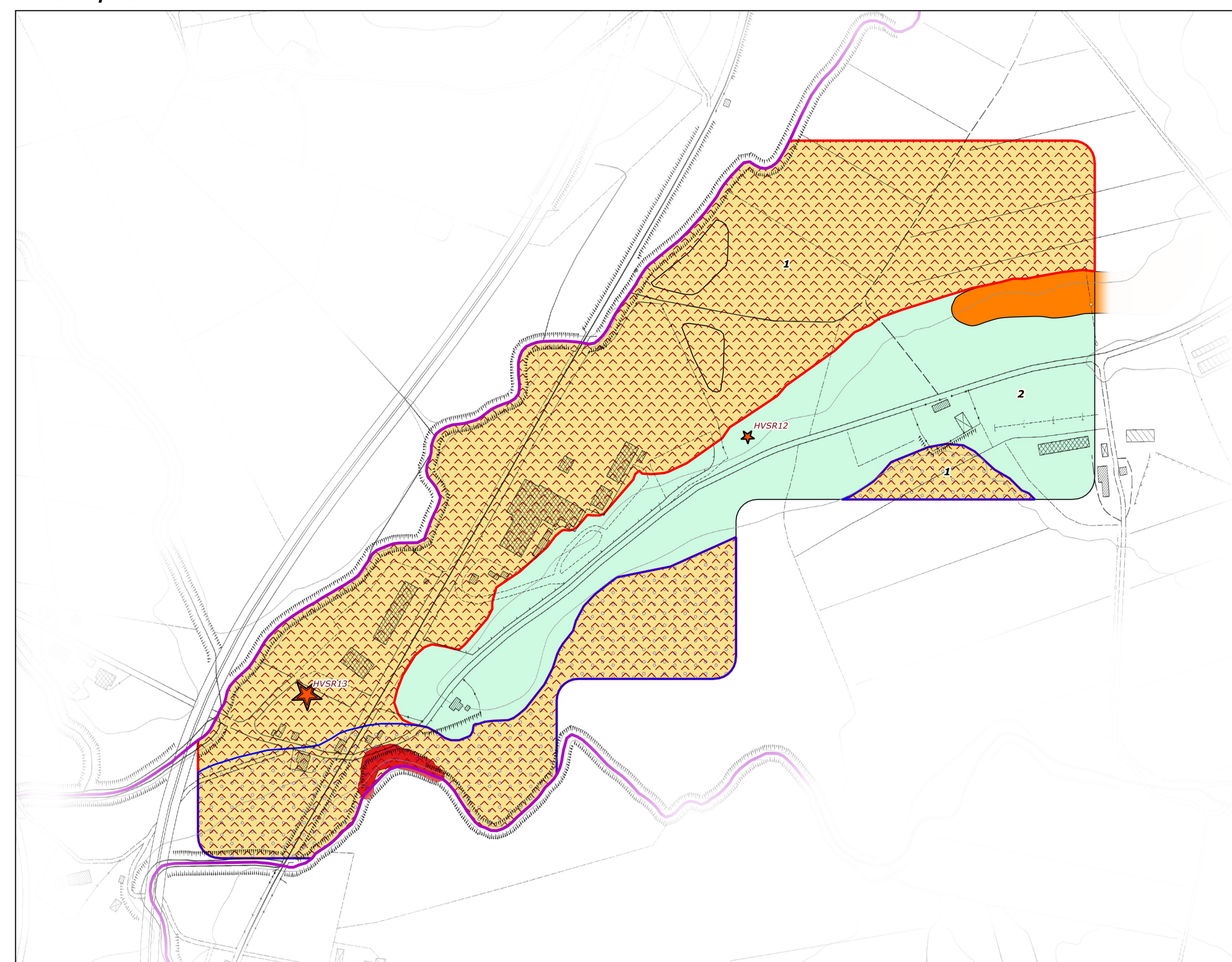
Area Mops Poggio la Penna



Area Mops Pomaia



Area Mops Macchiaverde



COMUNE DI SANTA LUCE
Provincia di Pisa



**INDAGINI GEOLOGICHE DI SUPPORTO
AL
PIANO OPERATIVO COMUNALE**

APPROVAZIONE

Data dicembre 2019

Scala **1:5.000**

**CARTA DELLE MICROZONE OMOGENEE
IN PROSPETTIVA SISMICA**

Tavola E

GEOPROGETTI
studio associato
Via Venezia 77
56038 Ponsacco
Geol. Emilio Pistilli

Luciano Giuntini
Geologo

Collaboratori:
Geol. Roberto Mattei
Geol. Iuri Pucci