
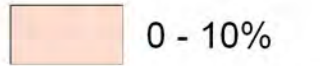
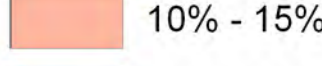
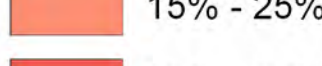
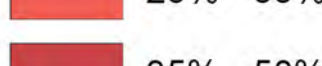
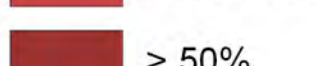



Legenda

 Limite comunale
 Classi di pendenza:
 0 - 10%
 10% - 15%
 15% - 25%
 25% - 35%
 35% - 50%
 > 50%

COMUNE DI SANTA LUCE
 Provincia di Pisa



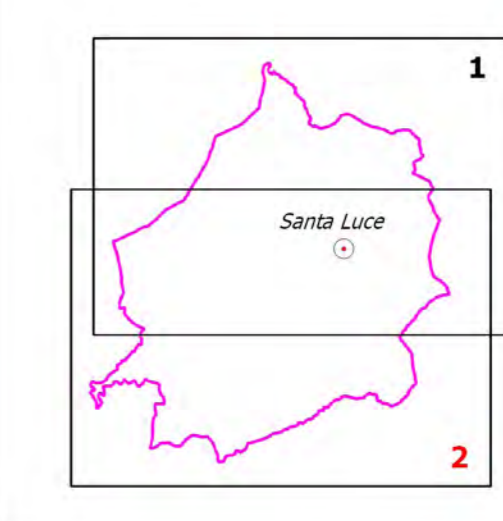
**INDAGINI GEOLOGICHE DI SUPPORTO
 AL
 PIANO OPERATIVO COMUNALE**

APPROVAZIONE
 Data dicembre 2019

Scala 1:10.000 **CARTA DELL'ACCLIVITA'** Tavola C2

GEOPROGETTI
 studio associato
 Via Venezia 77
 56038 Ponsacco
 Geol. Emilio Pistilli

Luciano Giuntini
 Geologo



Collaboratori:
 Geol. Roberto Mattei
 Geol. Iun Pucci